

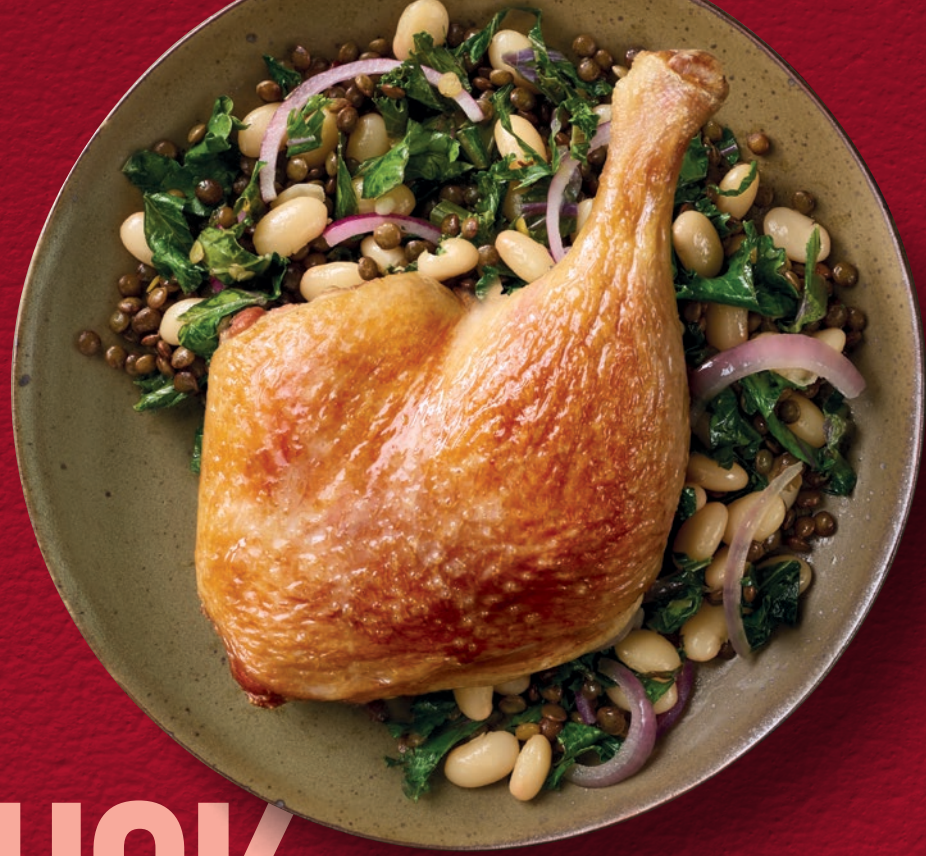


FOOD SERVICE

PRODUCT CATALOGUE 2025



Australia's favourite Duck!



WHO THE DUCK ARE WE?



100% Australian farm grown

Luv-a-Duck was founded by Art Shoppee in Nhill in 1968. 57 years on, we are now a proud, third generation, Australian family business.

Art, an entrepreneur, ran the local dry cleaners in Nhill and, seeking an opportunity, went to Melbourne to buy some chooks in response to shortages at the time. The market had sold out of chooks so he returned with 10 ducklings! His ducks soon proved very popular and the family business was hatched.

The Wimmera region in Victoria proved to be perfect for ducks. Nestled between deserts to the North and South, it had the perfect micro-climate for growing ducks. Gentle winds keep our barns cool on hot days and warm on cold nights.

Art was a visionary and recognised the benefits of vertical integration, biosecurity and community engagement.

Within 100km radius of Nhill are now 27 farms, our state of the art hatchery and primary processing. Down the road in Ballarat, Victoria, is secondary processing where our heat & eat range of pre-cooked ready meals are made.

Daniel Shoppee, Art's grandson, is now CEO and still retains the values Art lived by and continues to give back to the local regional communities. To farmers, schools, sports clubs and community groups.



SCAN TO WATCH our Australian Story

BREAKDOWN OF DUCK



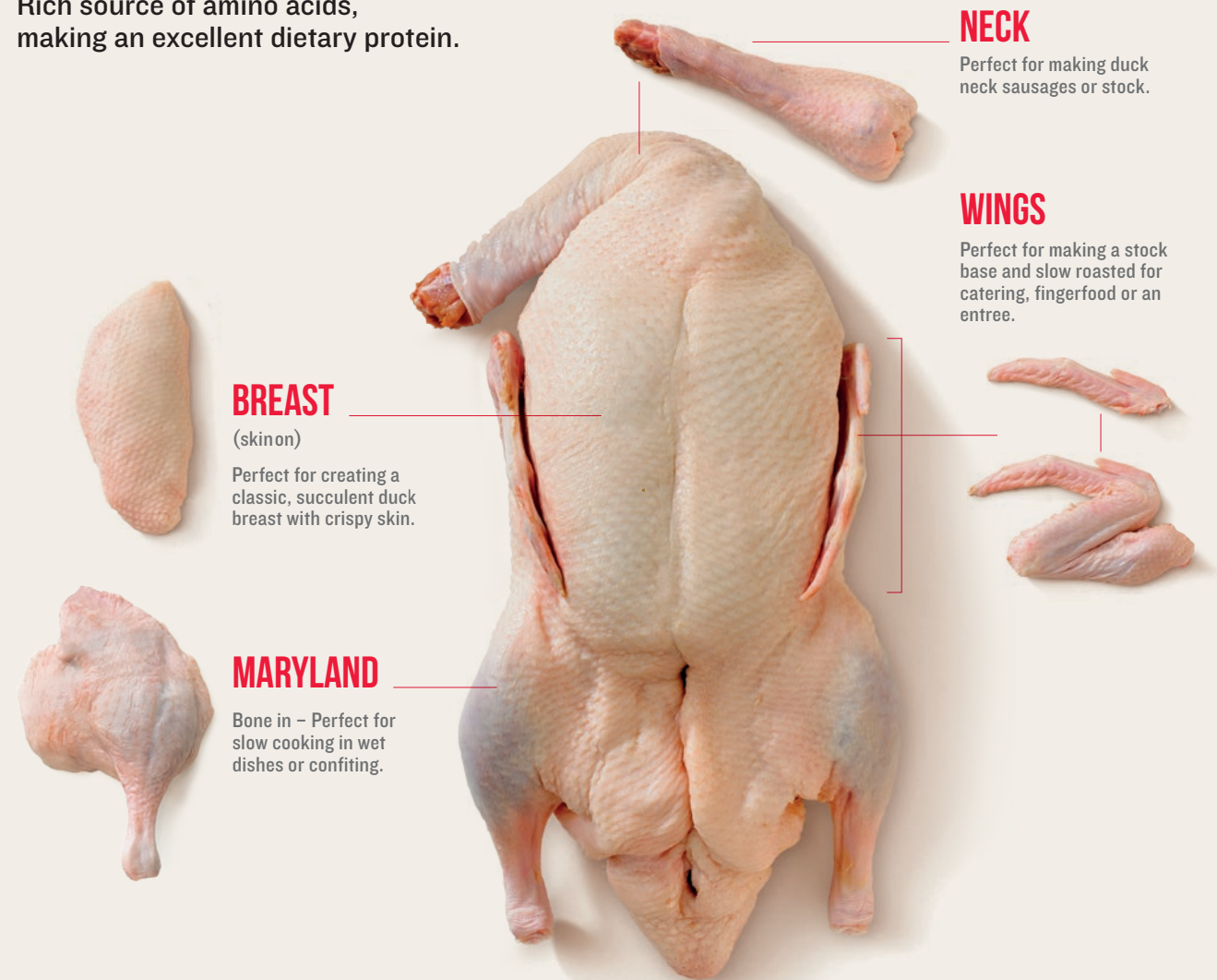
WELL I'LL BE DUCK'D!

An amazing, nutritional dense red meat, full of surprises:

- A good source of protein.
- TWICE the iron of beef.
- With skin off, breast has less fat than chicken, HALF that of lean beef.
- Excellent balance of unsaturated fats and Omega 3.
- Rich source of amino acids, making an excellent dietary protein.

- Abundant supply of B vitamins, greater than chicken.
- Ideal for people low in iron, wanting to build muscle and older people addressing nutritional deficiencies.

*The Nutritional Advantage and Market Potential of Duck Meat. (2024). Federation University.



PEKIN DUCK

Luv-a-Duck produces a Pekin duck, bred to produce a tender meaty duck with a higher meat to fat ratio than other breeds.



**HONEY AND SPICE
GLAZED ROASTED DUCK**
Australia's favourite Duck!

WHOLE DUCK



WESTERN BIRD

A meaty bird with head and feet off. No giblets. Australia's favourite duck.



PEKIN BIRD

Perfect for Asian cuisine. Perfect skin, head on, feet off and no giblets. The gold standard.

ITEM CODE	DESCRIPTION	UNITS PER CTN	SERVE PER UNIT	UOM	CTN PER PALLET	SHELF LIFE DAYS
-----------	-------------	---------------	----------------	-----	----------------	-----------------

WHOLE DUCK FRESH

WESTERN (NECK ON, HEAD & FEET OFF, NO GIBLETS)

09SMD	Luv-a-Duck - Small (1.6kg - 1.8kg) Fresh 6/ctn	6	1	KG	40	24
09MED	Luv-a-Duck - Medium (1.8kg - 2.0kg) Fresh 6/ctn	6	1	KG	40	24
09LGD	Luv-a-Duck - Large (2.0kg - 2.2kg) Fresh 6/ctn	6	1	KG	40	24
09XLD	Luv-a-Duck - Extra Large (2.2kg - 2.4kg) Fresh 6/ctn	6	1	KG	40	24
09XXD	Luv-a-Duck - XX Large (2.4kg - 2.6kg) Fresh 6/ctn	6	1	KG	40	24

WESTERN BULK (NECK ON, HEAD & FEET OFF, NO GIBLETS)

03XLF	Whole Duck Extra Large (2.2kg - 2.4kg) Bulk	6	1	KG	40	9
03XXF	Whole Duck XX Large (2.4kg - 2.6kg) Bulk	6	1	KG	40	9

WESTERN MAP (NECK ON, HEAD & FEET OFF, NO GIBLETS)

02MEM	Luv-a-Duck Medium (1.8kg - 2.0kg) MAP Fresh 4/ctn	4	1	KG	48	28
02LGM	Luv-a-Duck Large (2.0kg - 2.2kg) MAP Fresh 4/ctn	4	1	KG	48	28
03LGM	Fresh Whole Duck Large (2.0 - 2.2kg) MAP 5/ctn	5	1	KG	40	28
02XLM	Luv-a-Duck Extra Large (2.2kg - 2.4kg) MAP Fresh 4/ctn	4	1	KG	48	28
02XXM	Luv-a-Duck XX Large (2.4kg - 2.6kg) MAP Fresh 4/ctn	4	1	KG	48	28

PEKIN (CHINESE STYLE WITH PERFECT SKIN, HEAD ON, FEET OFF)

05LGF	Pekin Whole Duck Large (2.0kg - 2.2kg)	6	1	KG	40	9
05XLF	Pekin Whole Duck Extra Large (2.2kg - 2.4kg)	6	1	KG	40	9
05XXF	Pekin Whole Duck XX Large (2.4kg - 2.6kg)	6	1	KG	40	9

PEKIN - BULK (CHINESE STYLE WITH PERFECT SKIN, HEAD ON, FEET OFF)

06MEF	Luv-a-Duck Pekin - Medium (1.8kg - 2.0kg) Bulk Fresh 6/ctn	6	1	KG	40	9
06LGF	Luv-a-Duck Pekin - Large (2.0kg - 2.2kg) Bulk Fresh 6/ctn	6	1	KG	40	9
06XLF	Luv-a-Duck Pekin - Extra Large (2.2kg-2.4kg) Bulk Fresh 6/ctn	6	1	KG	40	9

WHOLE DUCK FROZEN

WESTERN (NECK ON, HEAD & FEET OFF, NO GIBLETS)

01XXSB	Luv-a-Duck XX Small (1kg - 1.6kg) Bulk Frozen 8/ctn	8	1	KG	40	730
01SMZ	Luv-a-Duck - Small (1.6kg - 1.8kg) Frozen 7/ctn	7	1	KG	40	730
01LGZ	Luv-a-Duck - Large (2.0kg - 2.2kg) Frozen 7/ctn	7	1	KG	40	730
01XLZ	Luv-a-Duck - Extra Large (2.2kg - 2.4kg) Frozen 6/ctn	6	1	KG	40	730
01XXZ	Luv-a-Duck - XX Large (2.4kg - 2.6kg) Frozen 6/ctn	6	1	KG	40	730
01XXXZ	Luv-a-Duck - XXX Large (2.6kg - 2.8kg) Frozen 5/ctn	5	1	KG	40	730

PEKIN (CHINESE STYLE WITH PERFECT SKIN, HEAD ON, FEET OFF)

05MEZ	Luv-a-Duck Pekin - Medium (1.8kg - 2.0kg) Frozen 7/ctn	7	1	KG	40	730
05LGZ	Luv-a-Duck Pekin - Large (2.0kg - 2.2kg) Frozen 7/ctn	7	1	KG	40	730
05XLZ	Luv-a-Duck Pekin - Extra Large (2.2kg - 2.4kg) Frozen 6/ctn	6	1	KG	40	730
05XXZ	Luv-a-Duck Pekin - XX Large (2.4kg - 2.6kg) Frozen 6/ctn	6	1	KG	40	730
05XXXZ	Luv-a-Duck Pekin - XXX Large (2.6kg - 2.8kg) Frozen 5/ctn	5	1	KG	40	730

ROAST DUCK BREAST WITH MIXED RICE AND CRANBERRY SAUCE
Australia's favourite Duck!



DUCK BREASTS



FRESH BREAST
 Chef's choice of premium quality duck breasts that are tender and ready to roast, bake or slow cook with your favourite flavours and seasoning.



FROZEN BREAST
 Convenient with 1 year shelf life and always useful for all occasions to impress.



ROAST BREAST
 Range of 5, extended life, chilled, cooked duck breasts. Pre-cooked, 176 days shelf life, guaranteed to give a moist, flavoursome, meaty texture.

ITEM CODE	DESCRIPTION	UNITS PER CTN	SERVE PER UNIT	UOM	CTN PER PALLET	SHELF LIFE DAYS
-----------	-------------	---------------	----------------	-----	----------------	-----------------

DUCK BREAST FILLETS

DUCK BREAST FRESH

2612FW	Duck Breast Fillets x 2 Fixed Weight 360g 6/ctn	6 x 2.16kg	6	CTN	96	35
2612MEF	Duck Breast Fillets - Medium (220g - 260g) Fresh 8/ctn	8	5	KG	40	21
2612LGF	Duck Breast Fillets - Large (260g - 300g) Fresh 8/ctn	8	5	KG	40	21

DUCK BREAST FROZEN

2612SMZ	Duck Breast Fillets - Regular (180g - 220g) Frozen 8/ctn	8 x 1kg	5	KG	40	730
2612MEZ	Duck Breast Fillets - Medium (220g - 260g) Frozen 8/ctn	8 x 1.2kg	5	KG	40	730
2612LGZ	Duck Breast Fillets - Large (260g - 300g) Frozen 8/ctn	8 x 1.4kg	5	KG	40	730
2512RZ	Duck Breast Fillets (180g - 220g) 2 pc FZ 10/ctn	10	2	KG	84	730
2611BZ	Duck Tenderloins 15kg - Bulk Frozen	1 x 15kg	na	CTN	32	540
2611IZ	Duck Tenderloins 1kg Frozen 8/ctn	8 x 1kg	na	CTN	60	540

DUCK BREAST MOISTURE INFUSED

271404Z	Duck Breast Fillets M.I (260g - 280g) Frozen 8/carton	8 x 1.08kg	4	CTN	40	365
271410Z	Duck Breast Fillets M.I (260g - 280g) Frozen 5/carton	5 x 2.7kg	10	CTN	40	365

DUCK BREAST COOKED

DUCK BREAST COOKED FROZEN

3212MEPZ	Peking Breast - Medium (150g - 180g) Frozen 7/ctn	7 x 1.02kg	6	KG	40	365
3212LGPZ	Peking Breast - Large (180g - 220g) Frozen 7/ctn	7 x 1.2kg	6	KG	40	365
321203P	Peking Breast - Bulk 2kg FZ R/W 4/ctn	4 x 2kg	na	KG	40	365
3212MERZ	Roasted Breast - Medium (150g - 180g) Frozen 7/ctn	7 x 1kg	6	KG	40	365
3212LGRZ	Roasted Breast - Large (180g - 220g) Frozen 7/ctn	7 x 1.2kg	6	KG	40	365
321203R	Roasted Breast - Bulk 2kg FZ R/W 4/ctn	4 x 2kg	na	KG	40	365
3212MESZ	Smoked Breast - Medium (150g - 180g) Frozen 7/ctn	7 x 1kg	6	KG	40	365
3212LGSZ	Smoked Breast - Large (180g - 220g) Frozen 7/ctn	7 x 1.2kg	6	KG	40	365

DUCK BREAST COOKED CHILLED

321201P	Peking Duck Breast 1kg-1.1kg 10/ctn - Chilled	10 x 1.1kg	na	KG	48	176
F3312PF	Peking Duck Breast 360g 6/ctn	6 x 360g	2	CTN	96	176
F3312RF	Roasted Duck Breast 360g 6/ctn	6 x 360g	2	CTN	96	176
F3312SF	Smoked Duck Breast 360g 6/ctn	6 x 360g	2	CTN	96	176
3315PB	Peking Duck Pancake Kit 560g 6/Ctn	6 x 560g	10	CTN	64	90

DUCK LEGS

ITEM CODE	DESCRIPTION	UNITS PER CTN	SERVE PER UNIT	UOM	CTN PER PALLET	SHELF LIFE DAYS
-----------	-------------	---------------	----------------	-----	----------------	-----------------

DUCK LEGS

DUCK LEGS FRESH

2613FW	Luv-a-Duck Fresh Duck Legs 440g 6/ctn	6 x 440g	2	CTN	96	24
2613MEF	Duck Legs - Medium (220g - 260g) Fresh 5/ctn	5 x 2.4kg	10	KG	48	14
2613LGF	Duck Legs - Large (260g - 300g) Fresh 5/ctn	5 x 2.8kg	10	KG	40	14

DUCK LEGS FROZEN

2613SMZ	Duck Legs - Small (180g - 220g) Frozen 5/ctn	5 x 2kg	10	KG	40	730
2613MEZ	Duck Legs - Medium (220g - 260g) FZ 5/ctn	5 x 2.4kg	10	KG	40	730
2613LGZ	Duck Legs - Large (260g - 300g) FZ 5/ctn	5 x 2.8kg	10	KG	40	730
2613XLZ	Duck Legs - Extra Large (301g+) FZ 5/ctn	5 x 1.8kg	8	KG	40	730
261303BZ	Raw Boneless Duck Leg Meat 10kg R/W FZ 5/ctn	5 x 2kg	na	KG	40	365
2513RZ	Duck Legs (180g - 260g) 2 pc FZ 10/ctn	10 x 3.6kg	2	KG	70	730
2613BSZ	Second Grade Legs - BLBR - Small (180g - 220g) Frozen 5/ctn	5 x 2kg	10	KG	40	730
2613BMZ	Second Grade Legs - BLBR - Medium (220g - 260g) Frozen 5/ctn	5 x 2.4kg	10	KG	40	730
2613BLZ	Second Grade Legs - BLBR - Large (260g - 300g) Frozen 5/ctn	5 x 2.8kg	10	KG	40	730

DUCK LEGS COOKED FLAVOURED

DUCK LEGS COOKED FROZEN

321399R	Roasted Duck Leg - Random Frozen 7ctn	7 x 1.6kg	6	KG	40	365
3213LGUIZ	Confit Legs - Large (2 x 220-260g) FZ 8/ctn	8 x 480g	2	KG	60	365
3213SLICE	Peking Sliced Duck Leg Meat 500g 9/ctn Frozen	9 x 500g	na	KG	60	365

DUCK LEGS COOKED CHILLED

F3313CF	Luv-a-Duck Confit Duck Legs 500g 6/ctn	6 x 500g	2	CTN	96	176
F3313HS	Honey Soy Duck Legs 500g 6/ctn	6 x 500g	2	CTN	96	176
F33130F	A L'Orange Duck Legs 500g 6/ctn	6 x 500g	2	CTN	96	176
F3313PF	Peking Duck Legs 500g 6/ctn	6 x 500g	2	CTN	96	176
F3313RF	Roast Duck Legs 450g 6/ctn	6 x 450g	2	CTN	96	176



FROZEN DUCK LEGS
Chef's choice of premium quality duck legs.



FROZEN ROASTED DUCK LEG
Precooked with perfect flavour. Simply thaw and heat to golden brown.



CONFIT DUCK LEGS
Range of 5, extended life, chilled, cooked duck legs. With 176 days shelf life, they are guaranteed to give meaty, tender, flavoursome legs after 15 minutes in the oven.

DUCK A L'ORANGE
WITH HERBED LENTILS
Australia's favourite Duck!

FRESH DUCK BREAST WITH GRILLED PEACHES AND TART CHERRY SAUCE
Australia's favourite Duck!



SPECIALTY



DUCK FAT
 100% pure rendered duck fat. Australia's favourite.



DUCK TONGUES
 Premium quality speciality products.

ITEM CODE	DESCRIPTION	UNITS PER CTN	SERVE PER UNIT	UOM	CTN PER PALLET	SHELF LIFE DAYS
-----------	-------------	---------------	----------------	-----	----------------	-----------------

SPECIALTY PRODUCTS

2908Z	Duck Fat Rendered 2kg Tub 6/ctn	6 x 2kg	na	CTN	40	455
2920B	Duck Fat Rendered 200g x 12/ctn	12 x 200g	na	CTN	150	455
7109Z	LAD Branded Peking Pancakes 10 Pack (48pkt box/60 ctn pp)	48 x 10pk	480	CTN	60	730

DUCK TRIMMING & OFFAL

3627SZ	Standard MDM (Mince) 2kg Frozen R/W 7/ctn	7 x 2kg	na	KG	40	365
3628LZ	Lean MDM (Mince) 10kg Bulk Frozen R/W	1 x 10kg	na	KG	60	365
3628SZ	Standard MDM (Mince) 10kg Bulk Frozen R/W	1 x 10kg	na	KG	60	365
3901BZ	Duck Liver Bulk R/W Frozen- avg 15 kg	1 x 15kg	na	KG	32	365
3901Z	Duck Liver 2kg Frozen R/W 6/ctn	6 x 2kg	na	KG	40	365
3904Z	Duck Hearts Bulk R/W - 15kg Frozen (STA)*	1 x 15kg	na	KG	32	365
3905Z	Duck Tongues 500g Frozen R/W 10/ctn	10 x 500g	na	KG	60	365
3902B	Duck Giblet R/W 15kg Frozen	1 x 15kg	na	KG	32	365
3902Z	Duck Giblets 2kg Frozen R/W 6/ctn	6 x 2kg	na	KG	40	365
3602B	2 Joint Wings 7kg Bulk R/W Frozen	1 x 7kg	na	KG	60	365
3604B	3 Joint Wings 7kg Bulk R/W Frozen	1 x 7kg	na	KG	60	365
3603B	Duck Feet 15kg Bulk R/W Frozen	1 x 15kg	na	KG	32	365
3603Z	Duck Feet 2kg Frozen R/W 6/ctn	6 x 2kg	na	KG	40	365
3606BSZ	Duck Necks Skinless RW Bulk Frozen 15kg (STA)*	1 x 15kg	na	KG	40	365
3606BZ	Duck Necks 10kg Frozen R/W (STA)*	1 x 10kg	na	KG	40	730
3620BZ	Duck Bones 15kg Frozen R/W (STA)*	1 x 15kg	na	KG	32	365
3907Z	Duck Heads (Beakless) Bulk R/W FZ- 10 kg	1 x 10 kg	na	KG	40	365
3908Z	Duck Heads Whole Bulk R/W FZ	1 x 10kg	na	KG	40	365

OTHER POULTRY & GAME

1504Z	Poussin #4 Frozen 20/ctn	RW	1	CTN	90	730
1505Z	Poussin #5 Frozen 20/ctn	20 x 500g	1	CTN	90	730
4000Z	Quail Butterfly-Semi boned 6/tray Frozen 12/ctn	12 x 900g	6	CTN	24	365
40LGZ	Myee Quail Large - 1.2kg - 6/tray Frozen 12/ctn	12 x 1.2kg	6	CTN	48	365
40MEZ	Myee Quail Medium - 1kg - 6/tray Frozen 12/ctn	12 x 1kg	6	CTN	64	365

(STA)* Subject to availability

**ANOTHER SUNRISE IN THE BEAUTIFUL
WIMMERA, VICTORIA. OUR HOME.**



For pricing or to arrange to see one of our friendly State Sales Managers.

State	Sales Manager	Email	Mobile
VIC/TAS	Helen Mangos	helenm@luvaduck.com.au	0417 309 136
NSW/ACT	Sales Team	sales@luvaduck.com.au	1300 64 9000
QLD/NT	Laura Norton	lauran@luvaduck.com.au	0491 444 856
WA/SA	Michael Mitchell	michaelm@luvaduck.com.au	0424 695 355



HUNGRY FOR MORE? LUVADUCK.COM.AU

Ring 1300 649 000 sales@luvaduck.com.au

